



SPEAKE MARIN

PRESS RELEASE 2026



SPEAKE MARIN INTRODUCES THE NEW RIPPLES KÁRMÁN LINE: THE INVISIBLE BOUNDARY THAT INSPIRES A NEW DIMENSION OF TIME

Speake Marin is expanding the Ripples collection. Originally launched in 2022 as the brand's first fully stainless-steel line with a casual-chic style, the collection now welcomes the new Ripples Kármán Line.

With this latest creation, the Geneva-based Maison is symbolically moving beyond the boundaries of traditional watchmaking to explore new aesthetics and techniques.

Drawing inspiration from the Kármán Line, the invisible boundary between Earth's atmosphere and outer space - this new model embodies the concept of transition: between earth and cosmos, matter and lightness.

This ultra-thin timepiece is refined, technically flawless, and remarkably light on the wrist.

With the Ripples Kármán Line, time does not weigh!

THE INSPIRATION: THE KÁRMÁN LINE

The Kármán Line is named after the Hungarian-American engineer and physicist Theodore von Kármán, who was renowned for his work in the fields of aeronautics and astronautics. Located 100 kilometres above sea level, it marks the conventional boundary between the regulated world of national sovereignty and the open, neutral and limitless realm of space.

Speake Marin has translated this vision into a language of watchmaking that has always relied on subtle balances: between tradition and innovation; between mechanical precision and aesthetic appeal.

The Ripples Kármán Line captures the very moment of transition when the deep blue of the sky gradually dissolves into the blackness of space. This is a gradual, almost imperceptible transition, a state of suspended equilibrium where matter seems to grow lighter, surfaces reflect light more intensely, and proportions become more harmonious, evoking the sensation of ascending towards infinity.

THE CASE: CONTEMPORARY DESIGN ENHANCED BY LIGHT

Like the Ripples Skeleton, the new Ripples Kármán Line is also crafted from 904L stainless steel. This high-quality alloy, chosen for its superior corrosion resistance compared to the more common 316L and for the exceptional brilliance it reveals when polished, enhances the iconic case and fully expresses the distinctive identity of the Ripples collection.

Designed by Stéphane Lacroix, the "La City" shape harmoniously blends the two most emblematic shapes in classic watchmaking - circles and squares - to create a contemporary and harmonious configuration. The balanced lines and skilfully alternating polished and satin surfaces amplify the interplay of light.

The case's optimal dimensions (40.30 mm in diameter and just 6.30 mm thick) contribute significantly to its comfortable fit: the watch slips naturally under the cuff while maintaining an impressive aesthetic presence.

The Ripples Kármán Line comes with an elegant integrated steel bracelet with a 2 mm micro-extension on each side and two extra straps (one in leather and one in rubber) with titanium buckle to transform the same watch into three distinct styles, adapting to every moment and emotion.

THE DIAL: BETWEEN BLUE AND INFINITY

The Ripples Kármán Line dial embodies the art of blending horological expertise with visual poetry.

For the first time within the collection, the Ripples Kármán Line boasts a sapphire crystal dial, a highly complex technical and aesthetic choice that introduces a new dimension of transparency and depth, amplifying the perception of lightness.

Its sapphire base reveals delicate Geneva stripes and a sunray texture, enhanced by a blue metallisation and rhodium-plated galvanic growth that highlights the ring framing the Maison's signature small seconds counter, positioned at 1:30. This subdial, with its radiant soleil finish, is completed by applied rhodium-plated indices and a mirror-polished steel hand, lending the composition a precious and refined finishing touch.

The raised, baton-shaped hour and minute indices, together with the rhodium-plated hands, harmonise beautifully with the dial's luminosity. With its unmistakable heart-shaped design inspired by London's Big Ben, the hour hand pays tribute to the brand's British roots.

The display is completed by the minute flange, secured using the under-set method. This technique joins the two components through a mechanical snap-fit system, eliminating the need for glue or soldering while ensuring both structural stability and aesthetic purity. Such a high-precision process requires the minute and second indices to be aligned with extreme accuracy, guaranteeing perfect correspondence and orientation with the hour markers.

Finished with an opal microbeaded surface, the flange features a lower section in a soft azure hue, evoking the luminous variations of the Kármán Line depending on the reflections.

Minute markers and the Speake Marin Genève logo, in white decal, complete the composition where light, depth and materials converge to elevate the experience of time.

THE MOVEMENT: A BLEND OF HIGH-FREQUENCY PRECISION AND MECHANICAL ARTISTRY

At the heart of the Ripples Kármán Line lies the new SMA06 automatic calibre, which was conceived and engineered entirely in-house at "Le Cercle des Horlogers" in La Chaux-de-Fonds. This movement is yet another testament to the Maison's pursuit of technical excellence.

Ultra-thin, with a thickness of only 2.5 mm, it is equipped with a high-frequency 5 Hz (36,000 vph) balance wheel that offers improved chronometric accuracy, better operating stability and a smoother second hand.

First introduced on the Ripples Skeleton, this solution confirms the technical vocation of the collection.

The calibre incorporates an additional wheel, which is crafted in-house, and which functions to presecure the rotation of the reversers when it is wound by hand, thereby directing the same rotation to the barrel. The two reversers are engineered to rotate efficiently in a single direction in order to optimise the motion of the micro rotor.

The integrated micro-rotor has become a hallmark feature of Speake Marin timepieces. Contributing to the watch's slim profile, it is adorned with an exclusive laser-engraved decoration composed of small rectangles in alternating relief with raised and recessed surfaces. The raised elements retain the rhodium-plated finish, while the recessed rectangles are treated with blue PVD to create a refined contrast that echoes the dial's colour. This intricate finish is technically demanding to achieve, but lends the watch a sense of aesthetic completeness by visually linking the movement to the dial.

Through the sapphire crystal case back, you can admire the Côtes de Genève-decorated bridges, the bevelled and hand-polished profiles created using the traditional anglage technique, and the surfaces finished with cerclage or micro-beading. Every detail exudes authentic savoir-faire, where aesthetics and functionality converge to create a harmonious whole in coherence with the dial.

BRACELET AND STRAPS: REFINED ELEGANCE MEETS CONTEMPORARY TRENDS

In addition to the traditional polished-brushed 904L steel bracelet with a folding clasp and a quick extension system, the Ripples Kármán Line comes with two additional straps with titanium buckles to enhance its versatility.

The first strap is made of smooth leather and features a gradient ranging from deep blue (Pantone 289C) to light blue (Pantone 283C). Its silver lining is embellished with a playful illustration titled "Winston in Space", celebrating Winston, Speake Marin's mascot.

The second strap comes in dark blue rubber with a sky-blue inner lining and offers a sportier, more contemporary interpretation while maintaining strong chromatic consistency with the theme of the sky opening up towards space.

Both additional straps clearly reference the Kármán Line, which gives this latest creation its name.

A BRAND AMBASSADOR WHO EMBODIES PRECISION AND CONCENTRATION.

Last February, Speake Marin welcomed Adrien Saddier as its brand ambassador.

Aged 33, Adrien Saddier is one of a new generation of French golfers making their mark on the international scene. Having been raised on the international circuit since childhood and having been a star player in major European tournaments, he has distinguished himself through his technical prowess, concentration, and ability to handle pressure. His rise to the top of French golf has been achieved because of discipline, talent and a constant pursuit of performance - values that are reflected perfectly by the Speake Marin philosophy.

On the green, as in fine watchmaking, every detail counts. Every movement requires control, sensibility and precision. With the Ripples Kármán Line on his wrist, Saddier becomes the ambassador of a vision of time that embodies elegance, rigour, and a spirit of conquering new heights.

A WORK OF ART FOR DISCERNING COLLECTORS

With the Ripples Kármán Line, Speake Marin once again confirms its excellence in creating proprietary movements, meticulous finishes, and a distinctive, consistent aesthetic language. Every detail is designed to delight the most discerning collectors, who are looking for a timepiece that not only measures time, but also expresses a vision and becomes a true lifelong companion.

This is a work of art that celebrates the moment suspended between sky and infinity, where time becomes an experience of emotion and freedom.

The Ripples Kármán Line will be available at authorized retailers worldwide as of May 2026, at the suggested retail price of CHF 33.900, excluding taxes.

TECHNICAL CHARACTERISTICS

Movement

In-house manufacture self-winding calibre SMA06 with fully integrated micro-rotor
Total components: 175
diameter: 32.00 mm
Thickness: 2.5 mm (without hands)
Frequency: 5 Hz / 36.000 vibrations per hour
Number of jewels: 27
Variable inertia balance wheel
Swiss lever escapement
Power reserve: 52-hour minimum (when fully wound)
Mainplate: rhodium-plated and microbeaded
Bridges: Côtes de Genève motif, chamfered and polished profiles using the anglage technique
Tungsten micro-rotor featuring an exclusive pattern of raised and recessed rectangles with alternating rhodium-plated and blue PVD finishes.

Functions

Hours, minutes, small seconds at 1:30

Case

Design: La City
Material: 904L stainless steel
Diameter: 40.30 mm
Thickness: 6.30 mm
Square bezel with rounded shapes, polished profile, satin-finished surface
Screw-down crown with engraved logo
Screw-down case back
Sapphire crystal glass with anti-reflective coating on dial and case back
Water-resistance: 5 ATM

Dial

Sapphire crystal glass, blue metallisation, sunray finish, and Côtes de Genève motif on the reverse side
Baton indices and rhodium-plated hour/minute hands, heart-shaped hour hand
Small seconds counter at 1:30, sunray finish, rhodium-plated counter ring using the galvanic growth process on sapphire.
Baton indices and rhodium-plated seconds markers, mirror-polished steel hand
Minute flange: blue PVD coating, opal microbeaded finish, white markers
Speake Marin Genève logo in white

Bracelet

Three-row integrated polished/brushed 904L steel bracelet with personalised folding buckle with the Maison's logo
Micro-adjustment up to 4 mm, with 2 mm extension on either side

Straps

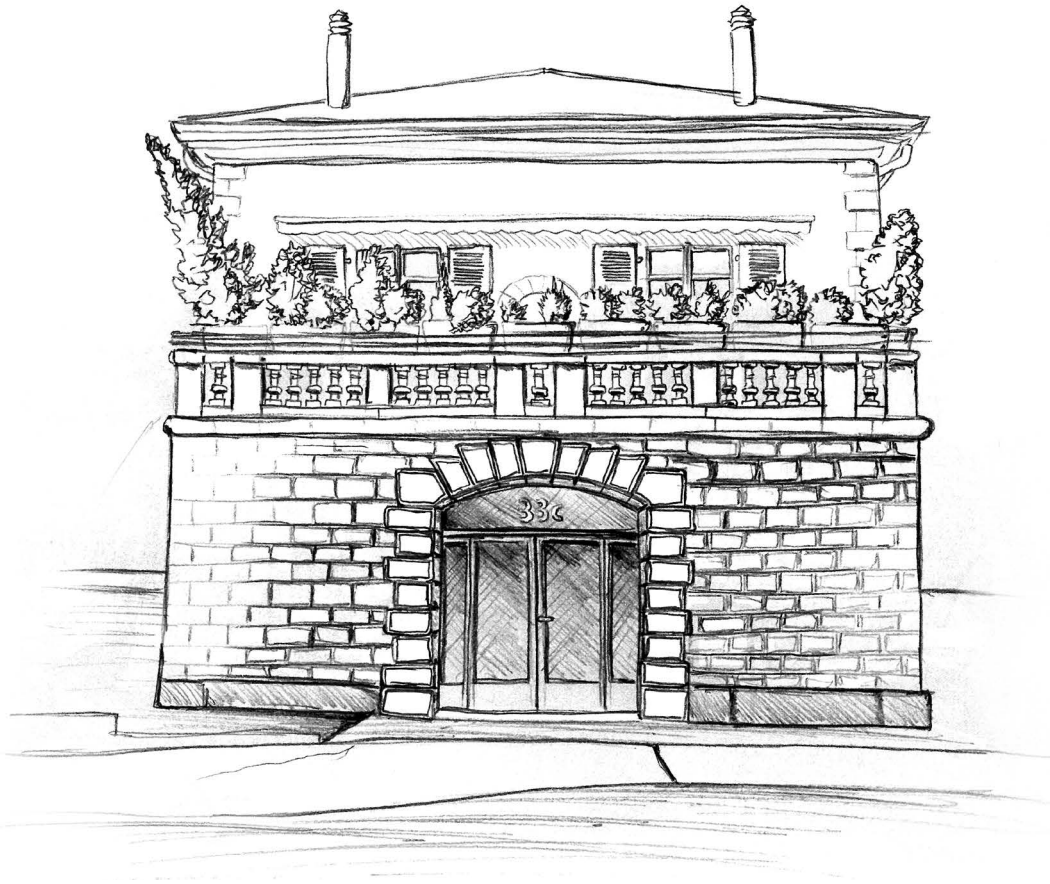
Smooth leather with a dark blue gradient (Pantone 289C) fading to sky blue (Pantone 283C), silver leather lining, Winston in Space illustration, dark blue stitching, titanium folding clasp.
Dark blue rubber, textile pattern, sky blue (Pantone 283 C) lining, titanium pin buckle.

Suggested price

RIPPLES KÁRMÁN LINE

Ref. 604020010 – CHF 33.900, excluding taxes

Press contact : madelyne@speake-marin.com - wissem@speake-marin.com



ABOUT SPEAKE MARIN

Speake Marin, Geneva-based independent brand, was founded in 2002 by an English watchmaker and was immediately received with enthusiasm by watch aficionados and collectors. In 2012, the company was acquired by Mme Christelle Rosnoblet, a French entrepreneur with a passion for art and watchmaking, who is now its CEO and President.

The entry of Mme Rosnoblet injects new energy into Speake Marin. Two pillars mark the Maison's present and future: the in-house manufacture of its calibres and the stylistic renewal according to contemporary trends, without forgetting the main distinctive codes that have been identifying the brand since its establishment.

In 2014, Mme Rosnoblet invested in the prestigious watchmaking atelier "Le Cercle des Horlogers" in La Chaux-de-Fonds, which is Speake Marin's internal workshop. Later on, Mme Rosnoblet becomes the majority shareholder. It is here that the Maison's timepieces are designed, produced, tested, decorated and assembled. Thanks to its independence, Speake Marin enjoys the utmost creative freedom which, combined with the expertise of highly qualified master watchmakers, allows it to create unique and inimitable watches featuring a bold and daring design.

The year 2026 marks a new milestone in the history of Speake Marin with the introduction of the SMA06 calibre. Building on its established expertise, this new movement incorporates the Maison's signature technical codes, combining refinement, performance, and sophistication. Featuring an integrated micro-rotor and a high-frequency balance oscillating at 36,000 vph, it represents a controlled evolution of Speake Marin's watchmaking savoir-faire. To date, the manufacture has developed 13 in-house calibres, underscoring its ongoing commitment to innovation and independence.

PRESS CONTACT :

Madelyne Rebischung

E-mail: madelyne@speake-marin.com

Mobile: +41 (0)79 943 18 15

Wissem Bakhchi

E-mail: wissem@speake-marin.com

Mobile: +41 79 456 09 55



Follow us :



33C, AVENUE DE
MIREMONT,
1206 GENEVA
SWITZERLAND