



# **SPEAKE-MARIN**

**2022 November  
Partner book**





Workshop	4
History	6
Speake-Marin Values	8
House Commitment	10
Speake-Marin Evolution	12
In-House Movements	14
Vintage Movements	16
Former Generation Movements	17
Movement Specificities	18
<b>COLLECTIONS</b>	
RIPPLES	22
<b>New</b> RIPPLES ANNIVERSARY	24
Openworked HMS V3	26
<b>New</b> Dual Time Lime	28
Dual Time Mint	30
Openworked Dual Time	32
Academic	34
<b>VINTAGE COLLECTION</b>	36
London Chronograph, Triple Date, Valjoux 88	38
London Chronograph, Valjoux 92 & Valjoux 72	40
<b>ART SERIES</b>	
<b>New</b> Tutti Frutti V2	44
Rhinoceros	46
Dragon	48
<b>HAUTE HORLOGERIE</b>	
<b>New</b> Openworked Tourbillon V2	52
Openworked Tourbillon	54
Openworked Vertical Double Tourbillon	56
Vertical Double Tourbillon	58
Sapphire - Tourbillon Minute Repeater Carillon	60
<b>EXCLUSIVE BESPOKE SERVICE</b>	62
Dials / Case engraving & setting	64
<b>ACCESSORIES</b>	
Straps & Buckles	66
User guide	69
<b>COMMUNICATION</b>	68
Corporate identity	71
Advertising / Social media	72
Press releases / Events	74
Watch Boxes / Display Material	78



**SPEAKE-MARIN SA**  
Avenue de Miremont 33C  
1206, Genève  
Switzerland  
+41 (0) 21 695 26 55  
info@speake-marin.com  
www.speake-marin.com

## WORKSHOP



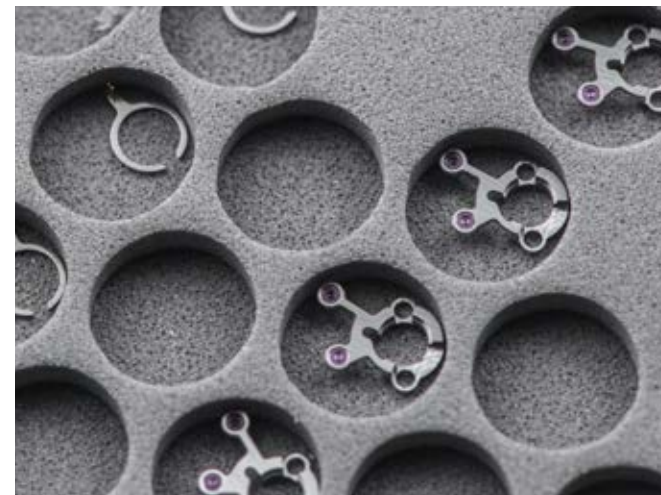
Swiss in the manufacturing till the end of their hands, but British in spirit, our timekeepers are discreet with a subtle touch of humour which appears through a hint of eccentricity: for instance, a movement that plays with time, an animation which catches your attention, a touch of colour which thwarts the conventional codes, a Piccadilly case with distinctive design.



## WORKSHOP



In our workshop near la Chaux-de-Fonds, the Speake-Marin watchmakers build the movements and assemble the watches in a rigorous watchmaking tradition where know-how and excellence are the key words. Timekeepers with a timeless elegance manufactured in very limited editions. Exclusive watches which are unique from the design of the dials to the complexity of the movement.







Speake-Marin creates, develops and assembles innovative timepieces, exclusively equipped with in-house mechanical movements as limited editions or unique pieces only.

Founded in 2002, the fine watchmaking house is based in the heart of Geneva since 2018. It was an obvious choice for Speake-Marin to establish its new head office in Geneva, which represents both the cradle of luxury fine watchmaking and the “city of peace”.

Speake-Marin creates «Belle Horlogerie» collections for those who want to wear a unique watch on their wrist. Speake-Marin finds inspiration for its work in modern architecture and design, reflected in contemporary design for movements and dials, combined with a distinctive classic inspired case. The brand appeals to watch connoisseurs who want to express their style and individuality with an audacious look that distinguishes them from others.







## SPEAKE-MARIN VALUES



### Freedom

Free spirit is a key driver for Speake-Marin. In terms of creation and entrepreneurship, Speake-Marin doesn't rely on anybody and is free to shape its future in any possible way.

### Independence

Speake-Marin is financially independent, which allows the company to make its own choice without any influence from external stakeholders.



## SPEAKE-MARIN VALUES



### Respect

Speake-Marin pays tribute to Swiss fine watchmaking heritage and respects the traditional know-how. Speake-Marin values all its relations as equal, both internal and external. All external parties are treated as partners and members of the "Speake-Marin family".

### Authenticity

Speake-Marin develops and sells authentic, purely "Swiss-made" watches. Both authentic through its products and values, Speake-Marin won't renege on its strong position statement.





## HOUSE COMMITMENT

Speake-Marin is committed to create “Belle Horlogerie”  
– *Beautiful timepieces* –  
in respect of the Swiss fine watchmaking heritage.

All collections are proposed in  
LIMITED EDITIONS ONLY.

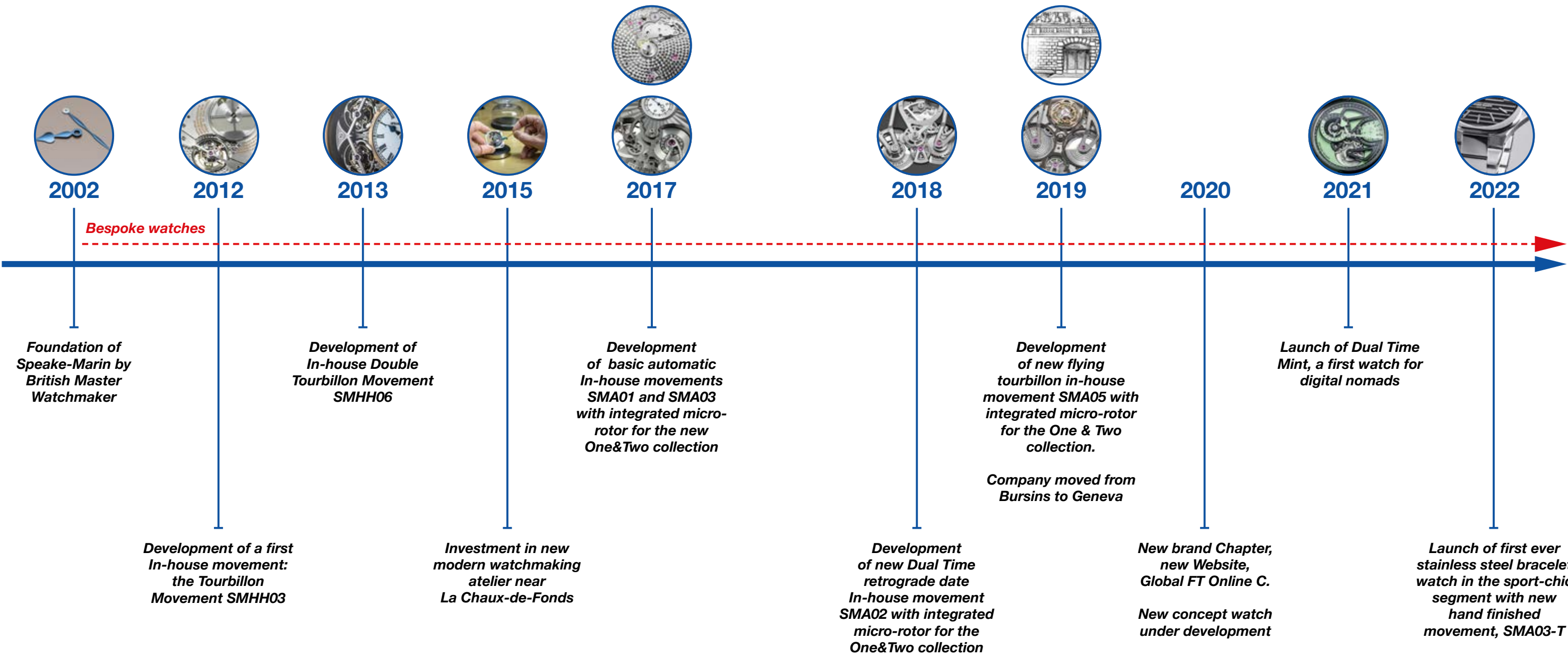
All collections house  
EXCEPTIONAL MOVEMENTS ONLY.

All creations are  
EXCLUSIVE to Speake-Marin.

Speake-Marin is aware of the 21st century’s challenges  
from an environmental and a social perspectives and  
therefore is maximizing efforts to decrease its carbon  
foot print, and to impact the society in a positive way.



## HOUSE COMMITMENT





## IN-HOUSE MOVEMENTS

Since 2015, Speake-Marin initiated a movement strategy to fully develop and assemble in-house movements within its atelier in Neuchâtel area, Switzerland.

This new strategy gave birth to the SMA collection, which includes openworked, closed dials and haute horlogerie movements.



SMA-HH06 / Released 2014 / **IN-GREEN**



SMA-HH02 / Released 2017 / **IN-GREEN**



SMA01 / Released 2017 / **IN-GREEN**



SMA03 / Released 2018 / **IN-GREEN**



SMA02 / Released 2019 / **IN-GREEN**



SMA05 / Released 2019 / **IN-GREEN**



SMA03-T / Released 2022 / **IN-GREEN**



SMA03-T20 / Released 2022 / **IN-GREEN**



VINTAGE MOVEMENTS

The London Chronograph collection makes vintage iconic movements live again.



Vintage VALJOUX 92 / Released 2016



Vintage VALJOUX 72 / Released 2019



Vintage VALJOUX 88 / Released 2020

FORMER GENERATION MOVEMENTS



FW2012 / Released 2003 / IN-HOUSE



SM2 / Released 2009 / IN-HOUSE



EROS / Released 2011



SMRT01 / Released 2012



SMA-HH03 / Released 2012 / IN-HOUSE



VAUCHER 3002 / Released 2014



Models ...	Openworked HMS	Openworked Dual Time	Academic Art Series	Ripples	Openworked Tourbillon	Vertical Double Tourbillon	Minute Repeater Tourbillon
Movement	SMA01	SMA02	SMA03	SMA03-T	SMA05	SMA HH-06	SMA HH-02
Casing-diameter	30.00 mm	34.00 mm	30.00 mm	30.00 mm	34.00 mm	38.00	34.40 mm
Height (without hands)	5.00 mm	6.65 mm	3.90 mm	3.90 mm	7.15 mm	8.75 mm	9.80 mm
Kind of winding	Automatic	Automatic	Automatic	Automatic	Automatic	Manual	Manual
Frequency	4 Hz (28'800 A/h)	4 Hz (28'800 A/h)	4 Hz (28'800 A/h)	4 Hz (28'800 A/h)	3 Hz (21'600 A/h)	3 Hz (21'600 A/h)	3 Hz (21'600 A/h)
Power reserve	52 h	52 h	52 h	52 h	72 h	72 h	72 h
Number of jewels	33	36	31	29	33	56	51
Number of components	171	273	147	147	290	402	536
Average rate	Criteria COSC	5 ± 5 s/d	5 ± 5 s/d	4 ± 4 s/d	4 ± 4 s/d	4 ± 4 s/d	4 ± 4 s/d
Winding by the winding-stem	192 turns	192 turns	192 turns	192 turns	192 turns	33 turns	33 turns

Models ...	Resilience Velshda Serpent Calendar	Spirit Wing Commander	Spirit Seafire	London Chronographe	London Chronographe Bronze	London Chronographe Bronze	London Chronographe Titane
Movement	Vacher 3002	Timeless TL-1024	ETA 7750	Valjoux 92	Valjoux 72	Valjoux 726	Valjoux 88
Casing-diameter	26.60 mm	30.00 mm	30.00 mm	29.50 mm	29.50 mm	29.50 mm	29.50 mm
Height (without hands)	3.70 mm	7.90 mm	7.90 mm	6.00 mm	7.33 mm	7.33 mm	7.33 mm
Kind of winding	Automatic	Automatic	Automatic	Manual	Manual	Manual	Manual
Frequency	4 Hz (28'800 A/h)	4 Hz (28'800 A/h)	4 Hz (28'800 A/h)	2.5 Hz (18'000 A/h)	2.5 Hz (18'000 A/h)	3 Hz (21'600 A/h)	2.5 Hz (18'000 A/h)
Power reserve	50 h	48 h	48 h	39 h	39 h	39 h	44 h
Number of jewels	28	-	25	-	-	-	
Number of components	193	-	-	-	-	-	
Average rate	-	-	-	-	-	-	-
Winding by the winding-stem	130 turns	40 turns	100 turns	-	-	-	





## COLLECTIONS

Speake-Marin fine watchmaking collections explore different universes and inspirations.

The One & Two collection reinvents fine watchmaking codes with openworked and three-dimensional dials inspired by modern design and architecture.

The London Chronograph collection makes vintage iconic movements live again.

The Art-Series are dedicated to engraving artwork and other art techniques.

The Haute Horlogerie collection is dedicated to high complications.

Last but not least, Speake-Marin goes one step further with its very exclusive on demand service: the Exclusive Bespoke Service.



## Ripples



40.30 Stainless-steel  
604015040

<b>Movement</b>	Calibre SMA03-T automatic movement with fully integrated micro-rotor. Hand-finished bridges, inner angle, rhodium-plated, geneva stripes.	<b>Thickness</b>	9.20 mm
<b>Power reserve</b>	52 hours	<b>Diameter</b>	40.30 mm
<b>Frequency</b>	28,800 v.p.h / 4Hz	<b>Water resistance</b>	5 ATM (50 meters)
<b>Jewels</b>	29	<b>Dial</b>	Black dial with «Ripples» finishing and polished indexes. Black small second counter at 1.30.
<b>Functions</b>	Central hours, minutes and small seconds	<b>Hands</b>	Heart-shaped rhodium-plated hands.
<b>Case</b>	New «La City» case in stainless-steel. Front and back sapphire crystals treated with anti-reflective coating.	<b>Strap</b>	Integrated stainless-steel bracelet.
<b>Quantity</b>	Limited annual production of 100 pieces.	<b>Buckle</b>	Stainless-steel folding buckle





## Ripples - 20<sup>TH</sup> Anniversary



40.30 Stainless-steel  
604015070

<b>Movement</b>	Calibre SMA03-T20 automatic movement with fully integrated micro-rotor. Hand-finished bridges, inner angles, rhodium-plated, geneva stripes.	<b>Thickness</b>	9.20 mm
<b>Power reserve</b>	52 hours	<b>Diameter</b>	40.30 mm
<b>Frequency</b>	28,800 v.p.h / 4Hz	<b>Water resistance</b>	5 ATM (50 meters)
<b>Jewels</b>	31	<b>Dial</b>	Solid gold dial with «Ripples» finishing and polished indexes. Solid gold small second counter at 1.30.
<b>Functions</b>	Central hours, minutes and small seconds	<b>Hands</b>	Heart-shaped rhodium-plated hands.
<b>Case</b>	New «La City» case in stainless-steel. Front and back sapphire crystals treated with anti-reflective coating.	<b>Strap</b>	Integrated stainless-steel bracelet.
<b>Quantity</b>	Limited edition of 50 pieces.	<b>Buckle</b>	Stainless-steel folding buckle



ONE & TWO COLLECTION



Openworked HMS V3



38Ø Red gold  
42381330, 10 pieces



42Ø Red gold  
42421330, 10 pieces

LIMITED EDITION  
N° 1 to 10



38Ø Titanium  
413813330, 19 pieces



42Ø Titanium  
41421330, 19 pieces

LIMITED EDITION  
OF 38

<b>Movement</b>	Calibre SMA01 automatic movement with fully integrated micro-rotor	<b>Thickness</b>	10.5 mm
<b>Power reserve</b>	52 hours	<b>Diameter</b>	38 mm and 42 mm
<b>Frequency</b>	28,800 v.p.h / 4Hz	<b>Water resistance</b>	3 bar (30 meters)
<b>Jewels</b>	33	<b>Dial</b>	Openworked dial. Sun burst Geneva stripes finish. Small black seconds counter at 1.30
<b>Functions</b>	Central hours, minutes and small seconds	<b>Hands</b>	Heart-shaped gold coated and blued steel hands.
<b>Case</b>	New generation Piccadilly case in 18k red gold or titanium (Grade 5). Front and back sapphire crystals treated with anti-reflective coating	<b>Strap</b>	Black alligator.
		<b>Buckle</b>	18K red gold pin buckle or titanium folding buckle



ONE & TWO COLLECTION



Openworked Dual Time Lime



38Ø Titanium  
413816390, 10 pieces



42Ø Titanium  
414216390, 18 pieces

LIMITED EDITION  
OF 28

<b>Movement</b>	Calibre SMA02 automatic movement with fully integrated micro-rotor	<b>Thickness</b>	12.35 mm
<b>Power reserve</b>	52 hours	<b>Diameter</b>	38 mm and 42 mm
<b>Frequency</b>	28,800 v.p.h / 4Hz	<b>Water resistance</b>	3 bar (30 meters)
<b>Jewels</b>	36	<b>Dial</b>	Openworked lime finished dial 24H Dual time indication in black and lime Small seconds at 1:30
<b>Functions</b>	Central hours, minutes and small seconds. Retrograde date and Dual Time Indication	<b>Hands</b>	Black heart-shaped hands with lime lacquer
<b>Case</b>	New generation Piccadilly case in titanium (Grade 5) with black DLC coating. Front and back sapphire crystals treated with anti-reflective coating	<b>Strap</b>	Lime rubber strap
		<b>Buckle</b>	Pin buckle titanium with black DLC coating



ONE & TWO COLLECTION



Openworked Dual Time Mint



38Ø Titanium  
413809290, 10 pieces



42Ø Titanium  
414209290, 18 pieces

LIMITED EDITION  
OF 28

<b>Movement</b>	Calibre SMA02 automatic movement with fully integrated micro-rotor	<b>Thickness</b>	12.35 mm
<b>Power reserve</b>	52 hours	<b>Diameter</b>	38 mm and 42 mm
<b>Frequency</b>	28,800 v.p.h / 4Hz	<b>Water resistance</b>	3 bar (30 meters)
<b>Jewels</b>	36	<b>Dial</b>	Openworked mint finished dial Dual time indication in black and mint Small seconds at 1:30
<b>Functions</b>	Central hours, minutes and small seconds. Retrograde date and Dual Time Indication	<b>Hands</b>	Heart-shaped rhodium plated hands with mint lacquer
<b>Case</b>	New generation Piccadilly case in titanium (Grade 5) with black DLC coating. Front and back sapphire crystals treated with anti-reflective coating	<b>Strap</b>	Mint rubber strap
		<b>Buckle</b>	Pin buckle titanium with black DLC coating



ONE & TWO COLLECTION



Openworked Dual Time



38Ø Red gold  
423809250, 20 pieces



42Ø Red gold  
424209250, 20 pieces

LIMITED EDITION  
OF 20



38Ø Titanium  
413809250, 30 pieces



42Ø Titanium  
414209250, 30 pieces

LIMITED EDITION  
OF 30

<b>Movement</b>	Calibre SMA02 automatic movement with fully integrated micro-rotor	<b>Thickness</b>	12.35 mm
<b>Power reserve</b>	52 hours	<b>Diameter</b>	38 mm and 42 mm
<b>Frequency</b>	28,800 v.p.h / 4Hz	<b>Water resistance</b>	3 bar (30 meters)
<b>Jewels</b>	36	<b>Dial</b>	Openworked black mat finished dial Dual time indication in black and brown Small seconds at 1.30
<b>Functions</b>	Central hours, minutes and small seconds. Retrograde date and Dual Time Indication	<b>Hands</b>	Heart-shaped gold coated or rhodium plated hands with superluminova
<b>Case</b>	New generation Piccadilly case in 18k red gold and titanium (Grade 5). Front and back sapphire crystals treated with anti-reflective coating	<b>Strap</b>	Black alligator.
		<b>Buckle</b>	18K red gold pin buckle or titanium folding buckle





## Academic



38Ø Titanium  
413812010



38Ø Titanium  
413812000



38Ø Titanium  
413812060



42Ø Titanium  
414212010



42Ø Titanium  
414212000



42Ø Titanium  
414212060

<b>Movement</b>	Calibre SMA03 automatic movement with fully integrated micro-rotor.
<b>Power reserve</b>	52 hours
<b>Frequency</b>	28,800 v.p.h / 4Hz
<b>Jewels</b>	31
<b>Functions</b>	Central hours, minutes and small seconds
<b>Case</b>	New generation Piccadilly case in titanium (Grade 5). Front and back sapphire crystals treated with anti-reflective coating
<b>Quantity</b>	Limited Edition of 38

<b>Thickness</b>	10.5 mm
<b>Diameter</b>	38 mm and 42 mm
<b>Water resistance</b>	3 bar (30 meters)
<b>Dial</b>	Two levels blue, grey or white dial: polished finish in the middle and mat finish in the outer circle. Small seconds at 1.30
<b>Hands</b>	Heart-shaped rhodium-plated hands.
<b>Strap</b>	Chocolate, sigaro, argile, magnet light nubuck
<b>Buckle</b>	Titanium folding buckle









VINTAGE COLLECTION



Non-Contractual images

London Chronograph / Valjoux 88



42Ø Titanium  
514208010, 15 pieces



42Ø Titanium  
514208050, 15 pieces



<b>Movement</b>	Vintage Calibre Valjoux 88, manual winding movement	<b>Thickness</b>	15.10 mm
<b>Power reserve</b>	44 hours	<b>Diameter</b>	42 mm
<b>Frequency</b>	18,000 v.p.h / 2.5Hz	<b>Water resistance</b>	3 bar (30 meters)
<b>Jewels</b>	-	<b>Dial</b>	Three-dimensional dial, with two black floating counters, blue and beige indexes. SuperLumiNova® date numerals and the indication of the moon
<b>Functions</b>	Hours and Minutes, Triple date, Chronograph, Moon phase	<b>Hands</b>	Heart-shaped rhodium plated hands with SuperLumiNova®
<b>Case</b>	Iconic Piccadilly case in titanium (grade 5) Front and back sapphire crystals treated with anti-reflective coating	<b>Strap</b>	Blue or Beige calf leather
		<b>Buckle</b>	Folding titanium buckle.





VINTAGE COLLECTION



London Chronograph / Valjoux 92



42Ø Titanium  
114208030, 14 pieces



42Ø Titanium  
114208010, 14 pieces



<b>Movement</b>	Calibre Valjoux 92, manual winding movement	<b>Thickness</b>	15 mm
<b>Power reserve</b>	40 hours	<b>Diameter</b>	42 mm
<b>Frequency</b>	18,000 v.p.h / 2.5Hz	<b>Water resistance</b>	3 bar (30 meters)
<b>Jewels</b>	17	<b>Dial</b>	Three-dimensional dial. Chronograph complication: 60 seconds and 45 minute floating counters. Rotating topping tool in the center. Chronograph function in red.
<b>Functions</b>	Chronograph. Central hours, minutes, seconds	<b>Hands</b>	Heart-shaped blued steel hands
<b>Case</b>	Iconic Piccadilly case in titanium (Grade 5).	<b>Strap</b>	Striped fabric or blue rubber
		<b>Buckle</b>	Stainless steel pin buckle





VINTAGE COLLECTION



Non-Contractual images

London Chronograph / Valjoux 72



42Ø Bronze  
594208010, 10 pieces



42Ø Bronze  
594208060, 10 pieces



<b>Movement</b>	Vintage Calibre Valjoux 72, manual winding movement
<b>Power reserve</b>	40 hours
<b>Frequency</b>	21,600 v.p.h / 3Hz
<b>Jewels</b>	-
<b>Functions</b>	Chronograph. Central hours, minutes, seconds
<b>Case</b>	Iconic Piccadilly case in bronze (alloy of bronze and tin). Front and back sapphire crystals treated with anti-reflective coating

<b>Thickness</b>	15 mm
<b>Diameter</b>	42 mm
<b>Water resistance</b>	3 bar (30 meters)
<b>Dial</b>	Three-dimensional dial. Chronograph complication: 60 seconds, 30 minute and 12 hours floating counters. Rotating topping tool in the center Chronograph function in orange.
<b>Hands</b>	Heart-shaped bronze hands
<b>Strap</b>	Beige calf leather
<b>Buckle</b>	Folding titanium buckle.





ART SERIES



Tutti Frutti V2



38Ø Titanium  
423814160, 10 pieces



42Ø Titanium  
424214160, 10 pieces

<b>Movement</b>	Calibre SMA03 automatic movement with micro-rotor.	<b>Thickness</b>	10.5 mm
<b>Power reserve</b>	52 hours	<b>Diameter</b>	38 mm and 42 mm
<b>Frequency</b>	28,800 v.p.h / 4Hz	<b>Water resistance</b>	3 ATM (30 meters)
<b>Jewels</b>	31	<b>Dial</b>	Unique carbon dial, developed especially for the brand in a Swiss high-tech company. Multicolored roman numerals. Small black laquered dial at 1:30
<b>Functions</b>	Central hours, minutes and small seconds at 1:30	<b>Hands</b>	Heart shaped gold coated hands
<b>Case</b>	New generation 5N red gold Piccadilly case. Front and back sapphire crystals treated with anti-reflective coating.	<b>Strap</b>	Black leather with double multicolored stitching.
<b>Quantity</b>	Limited Edition of 10 pieces per diameter	<b>Buckle</b>	5N red gold pin buckle







38Ø Titanium  
413813360, 4 pieces



42Ø Titanium  
414213360, 5 pieces

<b>Movement</b>	Calibre SMA03 automatic movement with micro-rotor.
<b>Power reserve</b>	52 hours
<b>Frequency</b>	28,800 v.p.h / 4Hz
<b>Jewels</b>	31
<b>Functions</b>	Central hours, minutes and small seconds at 1:30
<b>Case</b>	New generation Piccadilly case in titanium (Grade 5). Front and back sapphire crystals treated with anti-reflective coating
<b>Quantity</b>	Limited Edition of 9

<b>Thickness</b>	10.5 mm
<b>Diameter</b>	42 mm
<b>Water resistance</b>	3 bar (30 meters)
<b>Dial</b>	Engraved Rhinoceros dial on Black glossy lacquer with rotating topping tool
<b>Hands</b>	Heart shaped rhodium-plated hands
<b>Strap</b>	Lime tree wood bracelet, interior in natural cork
<b>Buckle</b>	Titanium folding buckle







42Ø Titanium  
414206300, 6 pieces



42Ø Titanium  
414206310, 6 pieces



42Ø Titanium  
414206320, 6 pieces

<b>Movement</b>	Calibre SMA03 automatic movement with micro-rotor.	<b>Thickness</b>	10.5 mm
<b>Power reserve</b>	52 hours	<b>Diameter</b>	42 mm
<b>Frequency</b>	28,800 v.p.h / 4Hz	<b>Water resistance</b>	3 bar (30 meters)
<b>Jewels</b>	31	<b>Dial</b>	Three dimensional engraved dial Small seconds at 1.30 Rotating topping tool 5N Dragon with grey, golden or red lacquer background.
<b>Functions</b>	Central hours, minutes and small seconds	<b>Hands</b>	Heart shaped rhodium-plated hands
<b>Case</b>	New generation Piccadilly case in titanium (Grade 5). Front and back sapphire crystals treated with anti-reflective coating	<b>Strap</b>	Black alligator
<b>Quantity</b>	Limited Edition of 18	<b>Buckle</b>	Titanium folding buckle











38Ø Red gold  
423811040, 10 pieces



42Ø Red gold  
424211040, 10 pieces



LIMITED EDITION  
OF 10



38Ø Titanium  
413811040, 10 pieces



42Ø Titanium  
414211040, 10 pieces



LIMITED EDITION  
OF 10

<b>Movement</b>	Calibre SMA05 automatic movement with fully integrated micro-rotor. 60 sec Flying Tourbillon	<b>Thickness</b>	12.35 mm
<b>Power reserve</b>	72 hours	<b>Diameter</b>	38 mm and 42 mm
<b>Frequency</b>	21,600 v.p.h / 3Hz	<b>Water resistance</b>	3 bar (30 meters)
<b>Jewels</b>	35	<b>Dial</b>	Openworked dial. Black microblasted mat finish. Black PVD bridges.
<b>Functions</b>	Central hours, minutes with power reserve.	<b>Hands</b>	Heart-shaped gold coated or black PVD plated hands with Superluminova
<b>Case</b>	New generation Piccadilly case in 18k rose gold and titanium (Grade 5) with black DLC coating. Front and back sapphire crystals treated with anti-reflective coating	<b>Strap</b>	Cool Grey
		<b>Buckle</b>	18K rose gold or titanium with black DLC coating pin buckle







38Ø Red gold  
423811250, 5 pieces



42Ø Red gold  
424211250, 5 pieces



38Ø Titanium  
413811250, 5 pieces




42Ø Titanium  
414211250, 5 pieces

<b>Movement</b>	Calibre SMA05 automatic movement with fully integrated micro-rotor. 60 sec Flying Tourbillon	<b>Thickness</b>	12.35 mm
<b>Power reserve</b>	72 hours	<b>Diameter</b>	38 mm and 42 mm
<b>Frequency</b>	21,600 v.p.h / 3Hz	<b>Water resistance</b>	3 bar (30 meters)
<b>Jewels</b>	33	<b>Dial</b>	Openworked dial. Black microblasted mat finish. Black plated bridge flanks
<b>Functions</b>	Central hours, minutes with power reserve.	<b>Hands</b>	Heart-shaped gold coated or rhodium plated hands with Superluminova
<b>Case</b>	New generation Piccadilly case in 18k red gold and titanium (Grade 5). Front and back sapphire crystals treated with anti-reflective coating	<b>Strap</b>	Black alligator
		<b>Buckle</b>	18K red gold pin buckle or titanium folding buckle








# Openworked Vertical Double Tourbillon





# Openworked Vertical Double Tourbillon



46Ø White gold  
934681150



<b>Movement</b>	Calibre SMA-HH06, manual winding vertical double tourbillon movement. Openworked movement. <u>Patented rate equalizer</u>	<b>Thickness</b>	14.3 mm
<b>Power reserve</b>	70 hours	<b>Diameter</b>	46 mm
<b>Frequency</b>	21,600 v.p.h / 3Hz	<b>Water resistance</b>	3 bar (30 meters)
<b>Jewels</b>	56	<b>Dial</b>	Openworked black floating dial with step effect
<b>Functions</b>	Off set hours, minutes with power reserve and day/night indicators	<b>Hands</b>	Heart-shaped rhodium plated hands
<b>Case</b>	Iconic Piccadilly case in white gold. Front and back sapphire crystals treated with anti-reflective coating	<b>Strap</b>	Black alligator
		<b>Buckle</b>	18k white gold pin buckle





46Ø White gold  
10053



<b>Movement</b>	Calibre SMA-HH06, manual winding vertical double tourbillon movement. <u>Patented rate equalizer</u> . Black plate and rhodium-plated discs and bridges.	<b>Thickness</b>	14.3 mm
		<b>Diameter</b>	46 mm
		<b>Water resistance</b>	3 bar (30 meters)
<b>Power reserve</b>	70 hours	<b>Dial</b>	Oven-fired, white enamel dial
<b>Frequency</b>	21,600 v.p.h / 3Hz	<b>Hands</b>	Heart-shaped blued steel hands
<b>Jewels</b>	56	<b>Strap</b>	Black alligator
<b>Functions</b>	Off set hours, minutes with power reserve and day/night indicators	<b>Buckle</b>	18K white gold pin buckle
<b>Case</b>	Iconic Piccadilly case in 18K white gold. Front and back sapphire crystals treated with anti-reflective coating		



46Ø White gold  
10054



<b>Movement</b>	Calibre SMA-HH06, manual winding vertical double tourbillon movement. <u>Patented rate equalizer</u> . Rhodium-plated plate and black discs and bridges.	<b>Thickness</b>	14.3 mm
		<b>Diameter</b>	46 mm
		<b>Water resistance</b>	3 bar (30 meters)
<b>Power reserve</b>	70 hours	<b>Dial</b>	Oven-fired, white enamel dial
<b>Frequency</b>	21,600 v.p.h / 3Hz	<b>Hands</b>	Heart-shaped blued steel hands
<b>Jewels</b>	56	<b>Strap</b>	Black alligator
<b>Functions</b>	Offset hours, minutes with power reserve and day/night indicators	<b>Buckle</b>	18K white gold pin buckle
<b>Case</b>	Iconic Piccadilly case in 18K white gold. Front and back sapphire crystals treated with anti-reflective coating		





# Sapphire - Tourbillon Minute Repeater Carillon





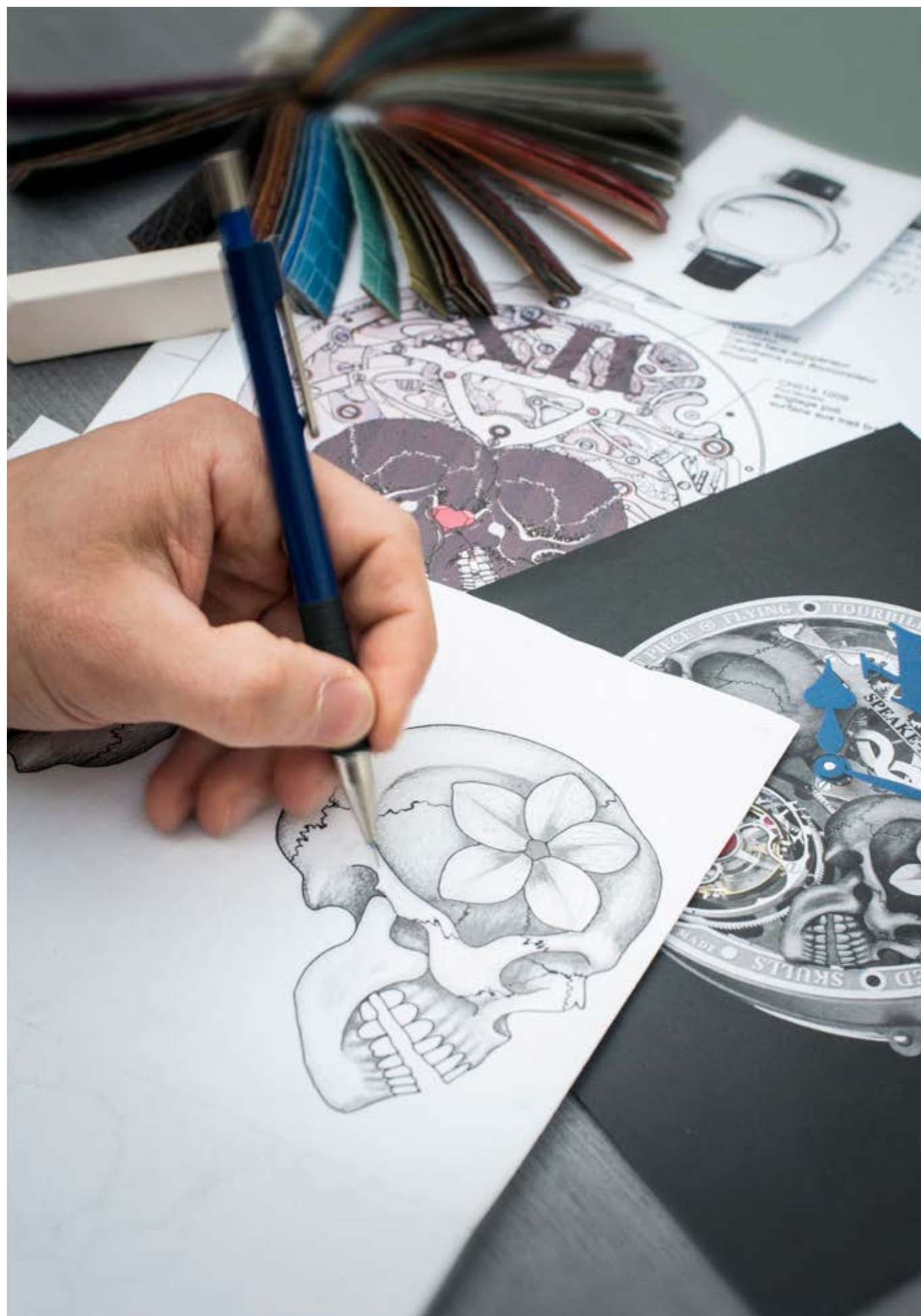
# Sapphire - Tourbillon Minute Repeater Carillon

Non-Contractual images



<b>Movement</b>	Calibre SMA-HH02, 60 seconds flying tourbillon. Skeletonized. <u>Patented safety module</u> . Manual winding movement	<b>Thickness</b>	17mm
<b>Functions</b>	Carillon minute repeater. Central hours and minutes.	<b>Diameter</b>	46.4 mm
<b>Power reserve</b>	72 hours	<b>Water resistance</b>	3 bar (30 meters)
<b>Frequency</b>	21.600 v.p.h / 3Hz	<b>Dial</b>	Skeletonized dial with big red XII figure dis-integration module.
<b>Case</b>	Full Sapphire crystal case: bezel, watch case, back and shoulders.	<b>Hands</b>	Heart-shaped blue steel hands
<b>Remark</b>	<b>Bespoke project on request</b>	<b>Strap</b>	On demand
		<b>Buckle</b>	Titanium folding buckle





## EXCLUSIVE BESPOKE SERVICE

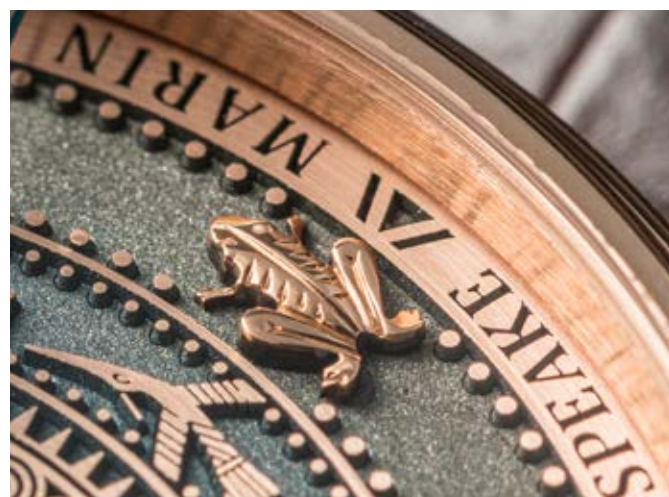
Speake-Marin at your service to create and develop unique timepieces or limited editions on demand.

- Benefit from a free internal design service
- Choose the material (Gold, Titanium) and the case size (38 mm or 42 mm)
  - Choose your case finish (treatment & engraving)
  - Enjoy the new Speake-Marin in-house movements
- Choose your movement finishing (customization, engraving etc...)
  - Choose your dial according to your wishes
  - Choose your custom made bracelet
- Delivery: depending on the complexity of the project, between 4 and 12 months upon receipt of your order confirmation

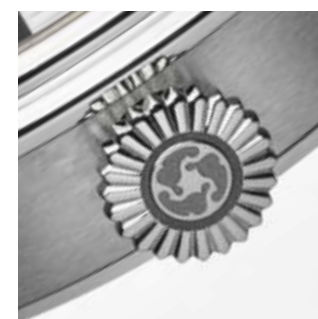




## Special creations - Dials



## Special creations - Case engraving & setting





ACCESSORIES



Straps & Buckles



40 000 Folding buckle  
Not adjustable to rubber straps

40 001 Red gold pin buckle

40 002 White gold pin buckle  
40 003 Stainless steel pin buckle

All watches are delivered with Medium size straps.  
All straps are available in Small, Medium and Large sizes. Except rubber straps.



20 000 Black alligator



20 001 Brown alligator



22 000 Black rubber



20 002 Blue alligator



22 002 Blue rubber



22 004 Brown rubber



22003 Orange rubber



22001 White rubber



21 004 Sigaro Nubuck



22005 Red rubber



21 005 Argile Nubuck



Orange, Calf leather



21 0006 Magnet light Nubuck



24 000 Natural Nubuck





## User guide

To be downloaded from our website:  
<http://www.speake-marin.com/user-guide>



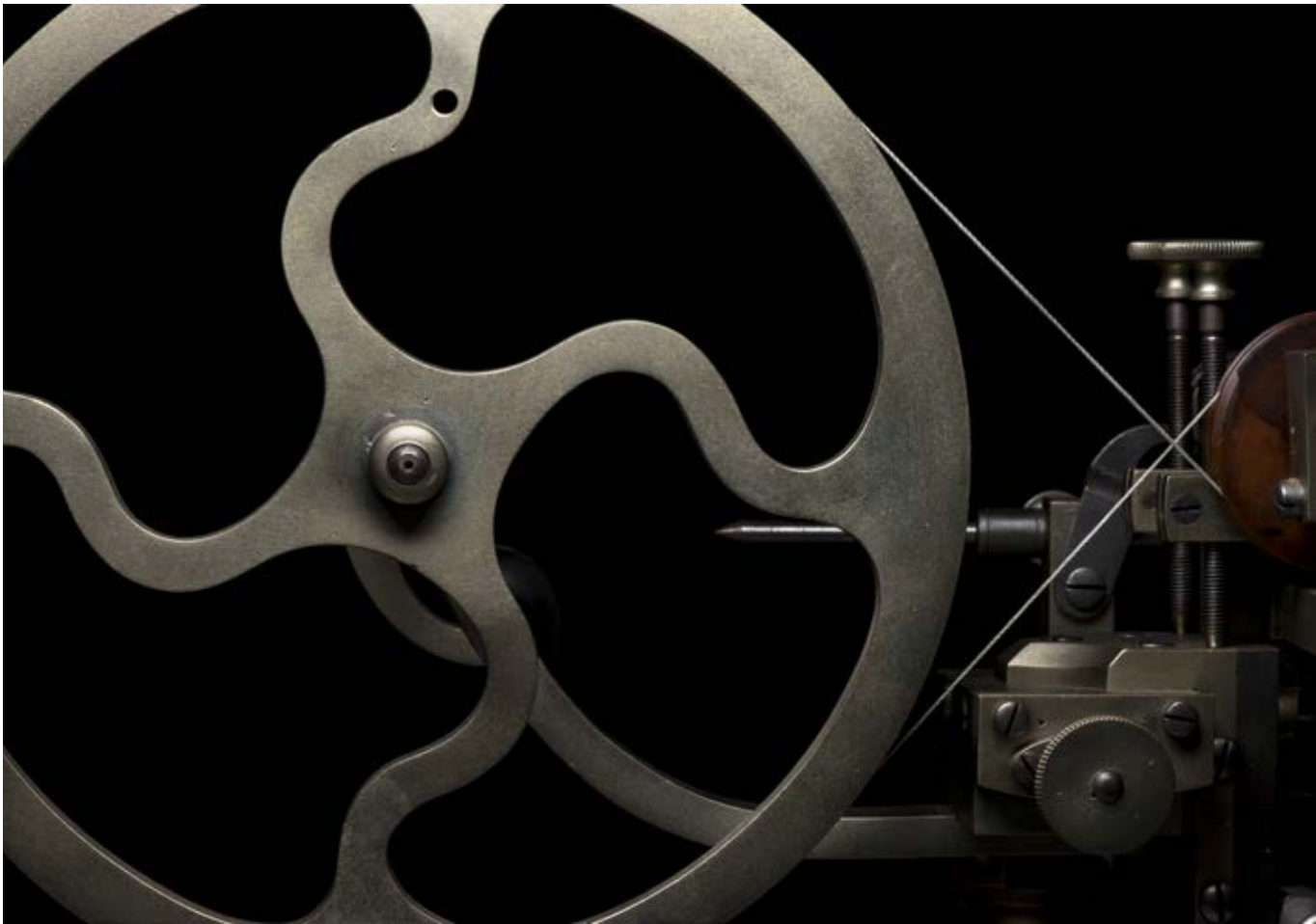


COMMUNICATION

For any request contact:

elodie@speake-marin.com

The design of the Speake-Marin Logo was inspired by the topping tool which is a tool used to alter the profile of the teeth of the wheels.

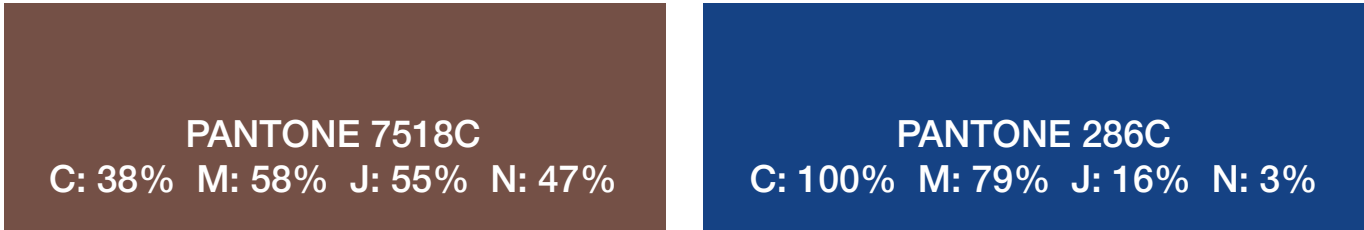


CORPORATE IDENTITY

LOGO  
Please use the simplified logo for all your communication. If you don't have it, do not hesitate to contact our communication department.



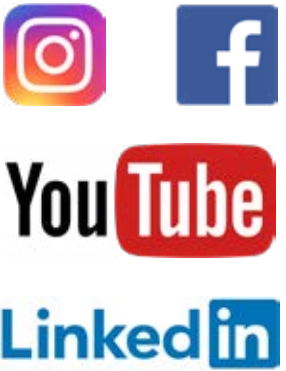
PANTONE  
The two main colours of Speake-Marin are brown and blue. To avoid all confusion, we defined the Pantone. We wish to create a strong identity and be recognised easily. Please use these two colours for all your communication.







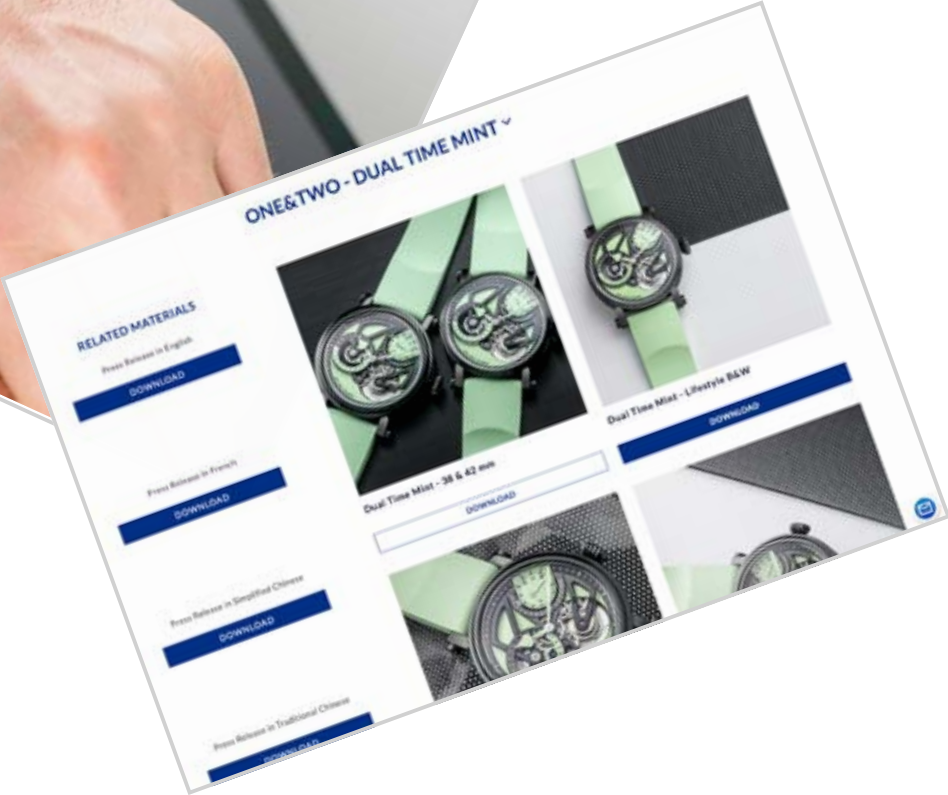
All Speake-Marin advertising must be validated by Speake-Marin. So as to prepare the advertising material, could you please send us 1 week before the deadline all the needed information: spec tech, vehicle, format.







All press releases are sent by e-mail to the press. Besides, these press kits are available on our website at any time, without restriction on : [www.speake-marin.com/press](http://www.speake-marin.com/press).



Should you need us for your invitations, do not hesitate to request help. We will help you to create an invitation in line with your event and our corporate identity.



Would you produce your invitation by yourself, please kindly send it to us for validation.







## EVENTS - Dinner or Cocktail

Our colour is brown with a hint of blue. Please use our corporate colours accordingly.

For example: a brown tablecloth with blue flowers or blue glasses.



## EVENTS - Exhibition



### BOOTH OR CONSTRUCTION.

As much as possible, use our colours and make our logo visible.  
Do not hesitate to contact us if you need to produce stickers or visuals.

### GIFT

The customer gift is an erasable Note Book. We are ready to provide them for your events, exhibitions, training sessions.

If you decide to produce your own gift for one of your events, please send us the project for validation.



WATCH BOXES

- Warranty card
- Shopping bag
- Blue pouch

Piano watch box for Haute Horlogerie only



DISPLAY MATERIAL

Please use Speake-marin display material only. Our displays are part of our corporate identity and reinforce our message.



Gloves  
Watch tray



Display material for counter



Display material for window







**SPEAKE-MARIN**



**SPEAKE-MARIN SA**  
Avenue de Miremont 33C  
1206, Genève  
Switzerland  
+41 (0) 21 695 26 55  
info@speake-marin.com  
www.speake-marin.com